



Living Life In

# Comfort

High Efficiency Evaporative Air Cooling >>

Industry leading advancements and reliability, the Aerocool Trophy Series high efficiency air coolers provide worry free operation and low maintenance, allowing you to - *Live Your Life In Comfort.*

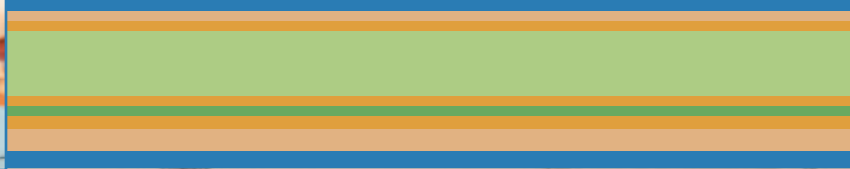


AEROCOOL®  
**Trophy**  
SERIES™  
Evaporative Air Cooler

Available with High-Efficiency 8" or 12" Rigid Media to provide reliable and efficient evaporative air cooling for your home.



U.L. Listed Models  
also available



# Versatility

# Reliability & Comfort

Your Family Deserves it.



## Choosing the Right Model To Meet Your Needs

Choosing the right Aerocool Trophy Series model is important for proper operation. All Trophy air coolers use efficient Rigid Media and are available with either the High-Efficiency 8" Rigid Media or the Ultra-Efficient 12" Rigid Media.

The Trophy Series air coolers are designed to operate at maximum efficiency with minimal maintenance. The Rigid Media gives the Trophy Series the ability deliver colder air while reducing the time spent replacing standard aspen media.

For maximum performance, choose the model with the proper rating and motor as well as the correct duct configuration. Ask your qualified contractor to help you choose the correct Aerocool Trophy Series model that best fits your home and your needs.

When specifying or ordering U.L. Listed models, add a "U" prefix to the front of the appropriate model number. In order to maintain this U.L. designation, these models must be used in conjunction with PMI supplied motor kits and pumps.

**Example: UTD4801**

The Trophy Series is available with 8" Rigid Media or 12" Rigid Media. 12" media is approximately 4-5% higher in evaporative efficiency over model utilizing the 8" media.



**Side Draft**  
(TH Model)




**Down Draft**  
(TD Model)



**Up Draft**  
(TUP Model)

### Specifications

Motors Ship Separately

Model Number 	Indus. STD Rating	Air Delivery CFM (Cubic Feet Per Minute)						Electrical Specifications			
		0.0"	0.1"	0.2"	0.3"	0.4"	0.5"	HP	Speed	Volts	Amps
TD/TH 4801	4400	3329	3035	2816	2623	2429	2235	1/2	2	115/230	9.0/5.3
TD/TH 4812	4400	2860	2790	2645	2350	2030	1890	1/2	2	115/230	9.9/5.9
TD/TH 4801	4800	3875	3619	3440	3286	3132	2978	3/4	2	115/230	11.2/6.0
TD/TH 4812	4800	3270	3220	3190	2940	2650	2350	3/4	2	115/230	12.1/6.6
TD/TH/TUP 6801	5800	4250	4125	4000	3850	3650	3425	3/4	2	115/230	11.2/6.0
TD/TH 6812	5800	4130	4000	3820	3630	3375	2740	3/4	2	115/230	12.1/6.6
TD/TH/TUP 6801	6800	4750	4600	4475	4375	4250	4050	1	2	115/230	13.3/6.9
TD/TH/TUP 6812	6800	4551	4440	4300	4080	3940	3680	1	2	115/230	14.2/7.6

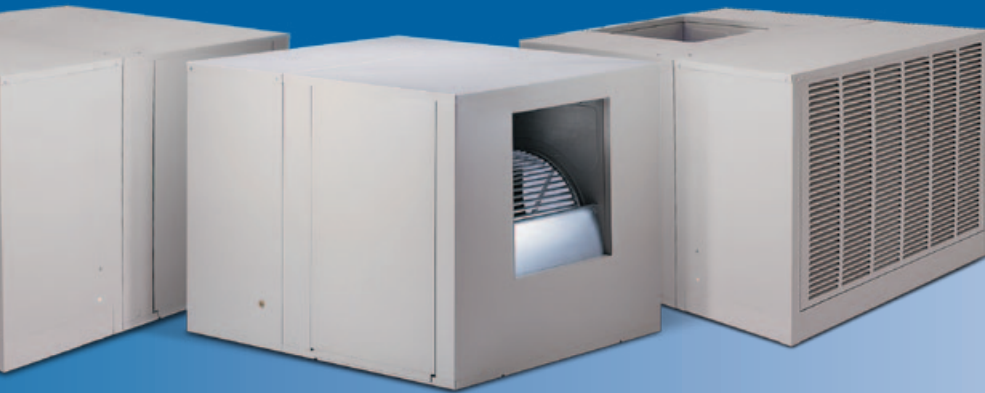
Model numbers that end in "12" indicate that these models utilize 12 inch media  
\*ALL MODELS SHIP WITH 115V. PUMPS INCLUDED

# ● Longevity and Low Maintenance

Utilizing single inlet design, the Trophy Series provides the ultimate protection available for the longevity of your cooler. Fully lined in a tough plastic shield, the all-metal construction of the wet module is protected from the damaging effects of typical deposits found in most water systems. High efficiency evaporative

cooling, low maintenance and long life of the Trophy Series makes this cooler your award winner.

Responding to your specific requirements, these units are available in three models: down, side and the up discharge for concealed ground level applications.



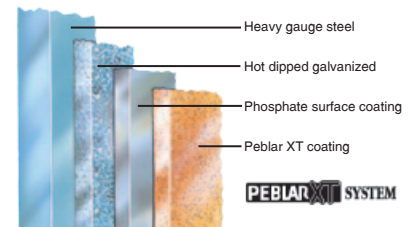
## 1 Choose 8" or 12" High-Efficiency Rigid Media

The Aerocool® evaporative cooler beats the others cold. It's attractive, easy to install, more efficient and less costly to operate. In fact it is up to 13% more efficient than conventional coolers. The media material provides cooler air and can last up to 10 times longer than aspen pads.



## 5 Peblar XT Protective Powder Coat

Our exclusive Peblar XT surface preparation is the highest quality architectural grade finish used in the industry to date. This attractive multi-layer bonded treatment protects your cooler against corrosion and assures years of reliable service.



## 2 Pro-Armor

The premier single inlet cooler with polymeric inner structure that completely shields the wet section from corrosive interaction.



## 6 Flomate

Flomate-quality water distribution system improves wet-out. US Patent #5,130,063



## 3 Low Sump Pump

The most powerful pump on the market today. US Patent #5,527,157



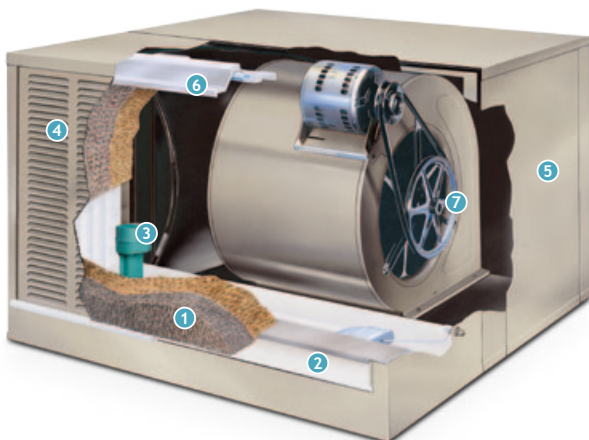
## 7 PMI Exclusive MIRROSCOPIC™ Blower Shaft Finishing Process

This yields a 90% improvement over the industry standard "ground finish". This means quieter operation and longer bearing and shaft life for your cooler!



## 4 Easy Access Gravity-Held Doors

Easy to remove access doors reduce maintenance time.



## 8 Pro-Shield (Optional Accessory)

This weatherizing panel prohibits outward heat loss and cold air from entering into your home during the off-season.

Easy to install, media protection is also afforded thereby increasing the life of the unit.



PHOENIX MANUFACTURING, INC.  
"Committed to Customer Success"™

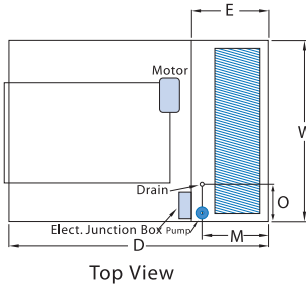
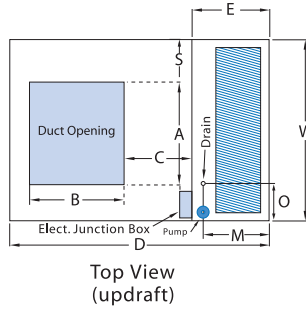
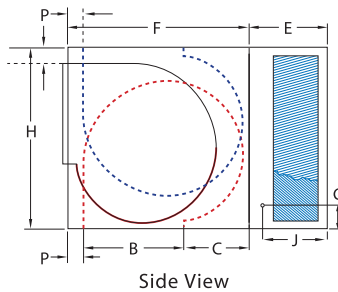
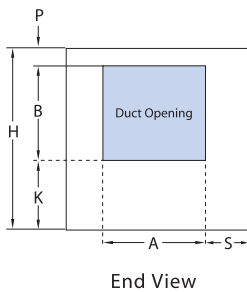
www.evapcool.com

# High Efficiency Evaporative Air Cooler

The Aerocool® Trophy™ Series cools better and requires less maintenance than conventional coolers.

## All Trophy™ Series Evaporative Coolers Feature:

- High-Efficiency long life rigid type pad material has superior performance qualities.
- Available with either 8” or 12” Rigid Media pad
- PEBLAR XT™ is an outdoor architectural type powder coat finish
- PLASTIC lined wet section
- FLO-MATE water distribution system
- MIRROSCOPIC™ polished blower shaft finish



## Recommendations

	MODEL	MODEL	MODEL
QTY			
CFM			
STAT PRES			
MTR			
HP			
SPEED			
VOLTAGE			

### Optional Accessories

### Notes:

Contractor	Submitted By:

\* Industry Standard Rating represents a numeric index for use in comparing units of different manufacturers

Phoenix Manufacturing, Inc. produces this equipment, with pride and craftsmanship, in the U.S.A. As a leader in our country's evaporative cooler production, we continuously strive to offer product improvements and reserve the right to change specifications and designs without notice.

## Trophy Series Engineering Data

Model Number	Cabinet			Duct Opening		Down	Side	E	F	Water Inlet		Drain		P	S	Ship Weight	Oper. Weight
	H	W	D	A	B					C	K	G	J				
TD4801	27 5/16	42	43	17 3/4	17 3/4	6 3/4		17	26	5 1/2	13 1/2	13 1/4	13	1 1/2	12 1/8	161	189
TH4801	27 5/16	42	43	17 3/4	17 3/4		8	17	26	5 1/2	13 1/2	13 1/4	13	1 1/2	12 1/8	161	189
TD4812	27 5/16	42	47	17 3/4	17 3/4	6 3/4		21	26	5 1/2	17 1/2	17 1/4	13	1 1/2	12 1/8	177	212
TH4812	27 5/16	42	47	17 3/4	17 3/4		8	21	26	5 1/2	17 1/2	17 1/4	13	1 1/2	12 1/8	177	212
TH6801	34 5/16	42	45	19 3/4	19 3/4	6 3/4		17	28	5 1/2	13 1/2	13 1/4	13	3 1/4	11 1/8	198	220
TD6801	34 5/16	42	45	19 3/4	19 3/4	6 3/4		17	28	5 1/2	13 1/2	13 1/4	13	1 1/2	11 1/8	198	220
TUP6801	34 5/16	42	45	19 3/4	19 3/4		11 5/16	17	28	5 1/2	13 1/2	13 1/4	13	1 1/2	11 1/8	198	220
TH6812	34 5/16	42	49	19 3/4	19 3/4	6 3/4		21	28	5 1/2	17 1/2	17 1/4	13	3 1/4	11 1/8	214	257
TD6812	34 5/16	42	49	19 3/4	19 3/4	6 3/4		21	28	5 1/2	17 1/2	17 1/4	13	1 1/2	11 1/8	214	257
TUP6812	34 5/16	42	49	19 3/4	19 3/4		11 5/16	21	28	5 1/2	17 1/2	17 1/4	13	1 1/2	11 1/8	214	257